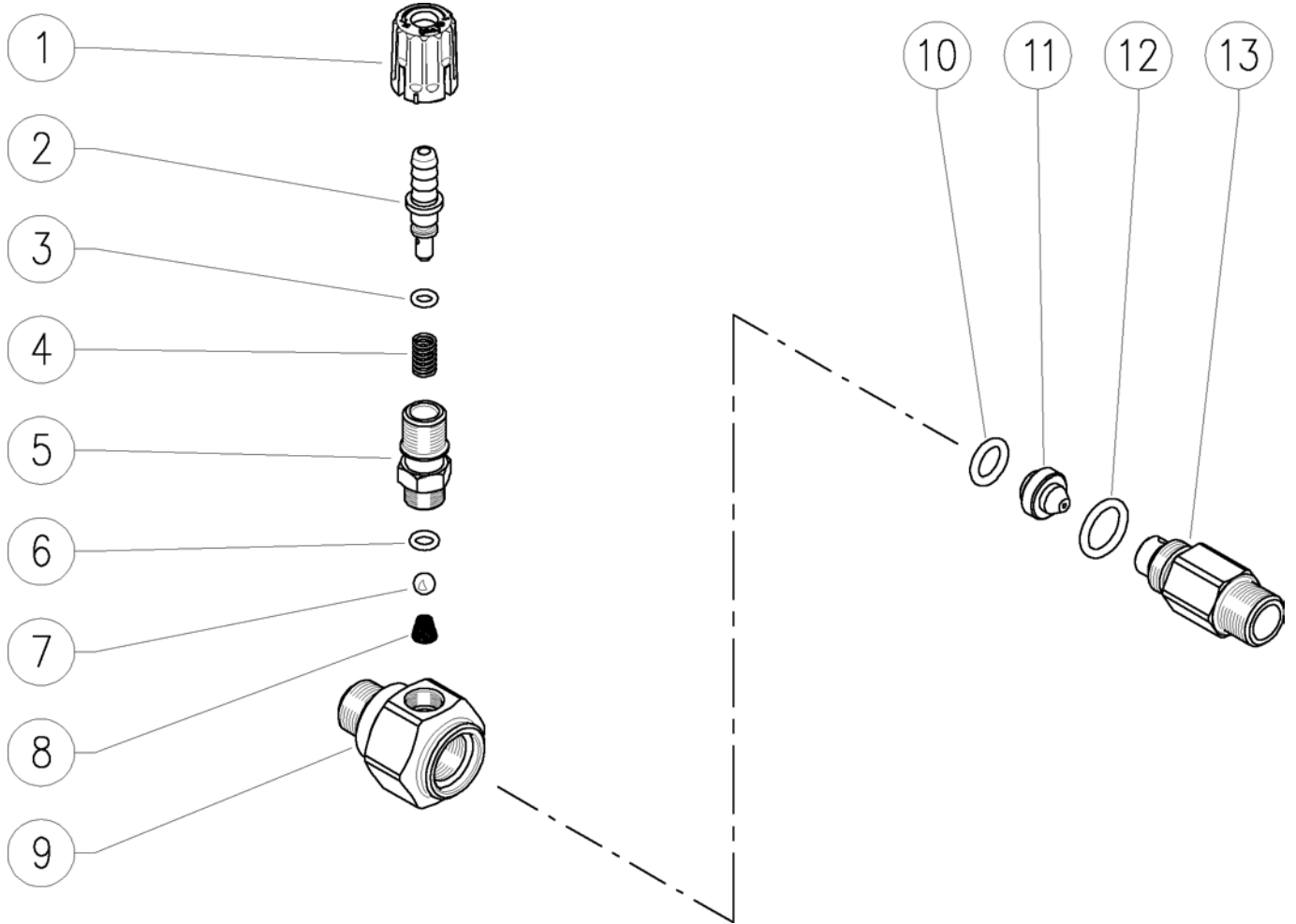


21.0500.12 Sst injector,adjust. 3/8MM Bsp 1,2mm
 21.0500.14 Sst injector,adjust. 3/8MM Bsp 1,4mm

21.0500.18 Sst injector,adjust. 3/8MM Bsp 1,8mm
 21.0500.21 Sst injector,adjust. 3/8MM Bsp 2,1mm



Pos.	P/N	Description	Q.ty	K1	K2	K3	K4	
1	21.0171.84R	Inject.knob, 1/4F Bsp black	1					10
2	21.0155.90R	Hose barb, d.8 mm sst.+o-ring	1					3
3	10.3043.01R	O-ring, 1,78x4,48 mm Vi 70	1					10
4	21.0158.51R	Spring, 0,8x7x15 mm Sst.	1					10
5	21.0173.51R	Coupling, M12x1-1/4M Bsp Sst.	1					10
6	10.3049.05R	O-ring, 1,78x5,28 mm PTFE	1					10
7	14.7420.01R	Ball, 7/32" Sst. Aisi 316	1					10
8	21.0160.51R	Tapered spring, Sst. -inject.	1					10

Pos.	P/N	Description	Q.ty	K1	K2	K3	K4	
9	21.0501.51R	Inject.housing, 3/8M Bsp sst	1					3
10	10.3174.10R	O-ring, 2,62x9,93 mm Vi 70	1					10
11	21.0507.51R	Inject.nozzle, D.15 - 1,2 mm Sst. (1)	1					5
11	21.0508.51R	Inject.nozzle, D.15 - 1,4 mm Sst. (2)	1					5
11	21.0504.51R	Inject.nozzle, D.15 - 1,8 mm Sst. (3)	1					5
11	21.0505.51R	Inject.nozzle, D.15 - 2,1 mm Sst. (4)	1					5
12	10.3179.10R	O-ring, 2,62x13,94 mm Vi 70	1					10
13	21.0502.51R	Extended coupling, 3/8M Bsp sst	1					3

(1) 21.0500.12 (2) 21.0500.14 (3) 21.0500.18 (4) 21.0500.21