



EQUIPAGGIAMENTI
TECNICI
LAVAGGIO

UR60 - UGELLO ROTANTE INOX G1/4F
UR60 - SST. ROTATING NOZZLE 1/4Bsp F



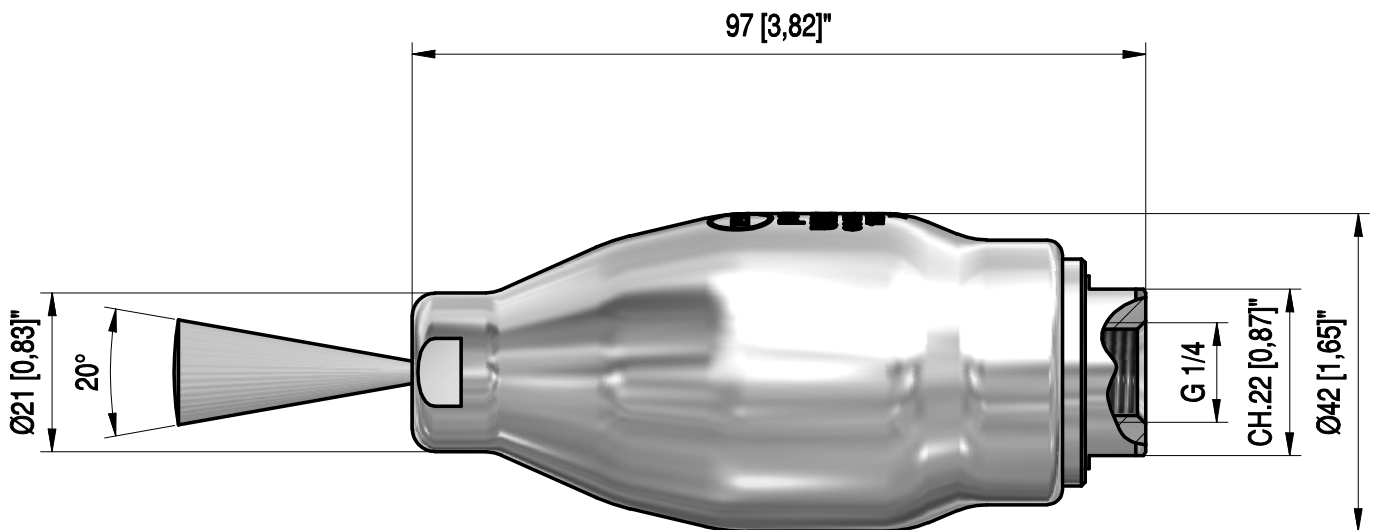
2

05/11/2012

CARATTERISTICHE TECNICHE - SPECIFICATIONS

- PRESSIONE NOMINALE <i>RATED PRESSURE</i>	600 bar - 60 MPa (8700 psi)
- PRESSIONE MINIMA DI UTILIZZO <i>MIN. OPERATING PRESSURE</i>	180 bar - 18 MPa (2600 psi)
- PORTATA MINIMA <i>MIN. FLOW RATE</i>	6.2 L/min (1.6 USGp.m.) 180 bar - 18 MPa (2600 psi) ugello (nozzle) 02
- PORTATA MASSIMA <i>MAX FLOW RATE</i>	44.6 L/min (11.8 USGp.m.) 600 bar - 60 MPa (8700 psi) ugello (nozzle) 08
- TEMPERATURA MINIMA <i>MIN WORKING TEMPERATURE</i>	5° C (41° F)
- TEMPERATURA MASSIMA <i>MAX WORKING TEMPERATURE</i>	90° C (195° F)
- MASSA <i>WEIGHT</i>	540 g (19 oz.)

MISURE D'INGOMBRO - OVERALL DIMENSIONS

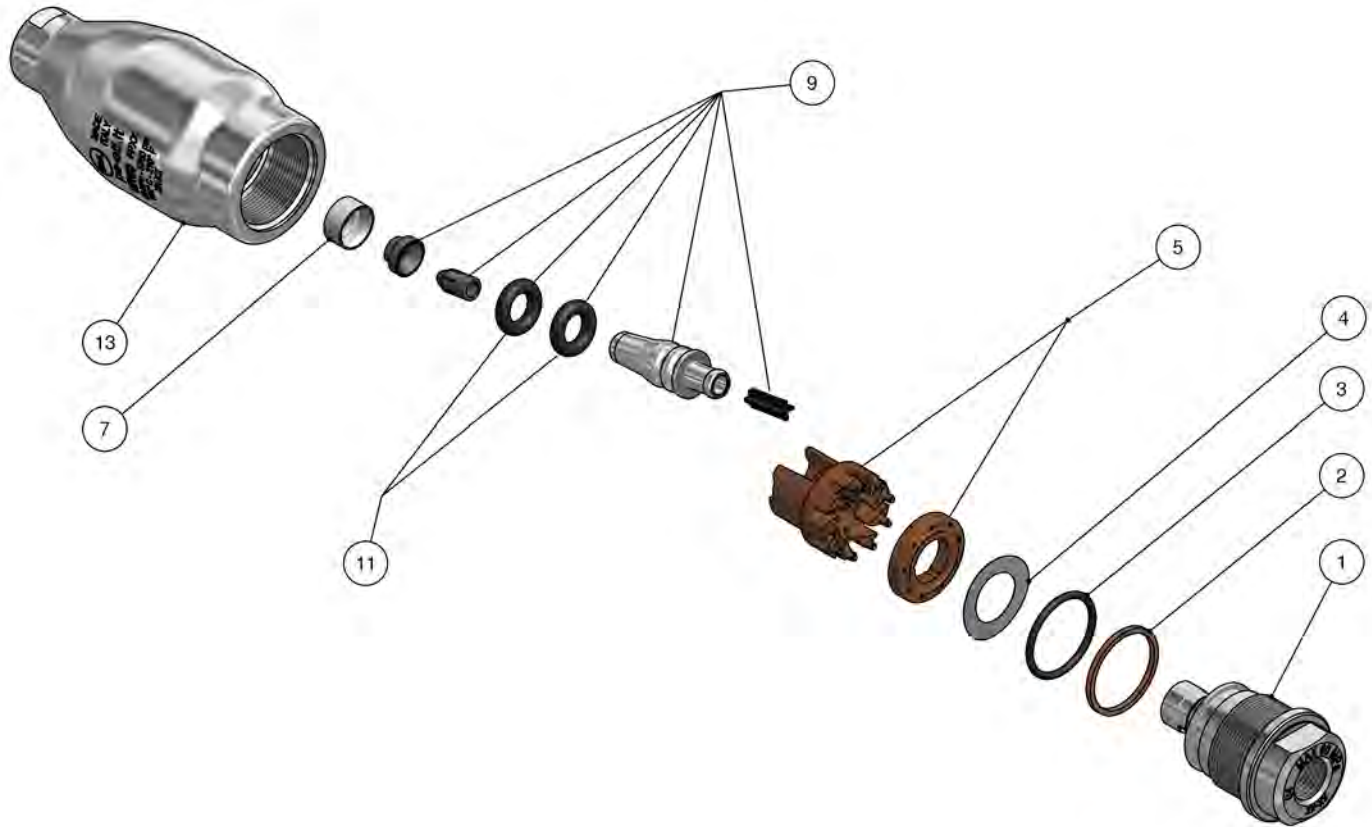


CODICE <i>CODE</i>	FATTORE DI PORTATA <i>CAPACITY SIZE</i>
25.1460.20	02
25.1460.30	03
25.1460.35	035
25.1460.40	04

CODICE <i>CODE</i>	FATTORE DI PORTATA <i>CAPACITY SIZE</i>
25.1460.50	05
25.1460.60	06
25.1460.65	065
25.1460.70	07
25.1460.80	08

25.1460.20 UR60-02 Sst. rotat.nzl,60MPa
 25.1460.30 UR60-03 Sst. rotat.nzl,60MPa
 25.1460.35 UR60-035 Sst. rotat.nzl,60MPa
 25.1460.40 UR60-04 Sst. rotat.nzl,60MPa

25.1460.50 UR60-05 Sst. rotat.nzl,60MPa
 25.1460.60 UR60-06 Sst. rotat.nzl,60MPa
 25.1460.70 UR60-07 Sst. rotat.nzl,60MPa
 25.1460.80 UR60-08 Sst. rotat.nzl,60MPa



Pos.	P/N	Description	Q.ty	K1	K2	K3	K4		Pos.	P/N	Description	Q.ty	K1	K2	K3	K4	
1	25.1482.51R	Sst coupling, 1/4 F Bsp-FP.02 (1)	1					1	7	25.1462.85R	Seal, 7,2x12x6 mm Pa6	1					5
1	25.1483.51R	Sst coupling, 1/4 F Bsp-FP.03 (2,3)	1					2	9	25.1452.24	Spares kit -UR60.020 (1)	1					1
1	25.1484.51R	Sst coupling, 1/4 F Bsp-FP.04 (4)	1					2	9	25.1453.24	Spares kit -UR60.030 (2)	1					1
1	25.1485.51R	Sst coupling, 1/4 F Bsp-FP.05 (5)	1					1	9	25.1511.24	Spares kit -UR60.035 (3)	1					1
1	25.1486.51R	Sst coupling, 1/4 F Bsp-FP.06 (6)	1					1	9	25.1454.24	Spares kit -UR60.040 (4)	1					1
1	25.1487.51R	Sst coupling, 1/4 F Bsp-FP.07 (7)	1					1	9	25.1455.24	Spares kit -UR60.050 (5)	1					1
1	25.1488.51R	Sst coupling, 1/4 F Bsp-FP.08 (8)	1					1	9	25.1456.24	Spares kit -UR60.060 (6)	1					1
2	10.4091.00R	Back-up ring, 21,2x24x1,5 mm	1					10	9	25.1457.24	Spares kit -UR60.070 (8)	1					1
3	10.3072.01R	O-ring, 1,78x20,35 mm Ni 85	1					10	9	25.1458.24	Spares kit -UR60.080 (8)	1					1
4	25.1626.63R	Washer, 14,8x23x0,1mm Sst.	1					5	11	10.3230.01R	O-ring, 3,53x7,52 mm Ni 85	2					10
5	25.1631.22R	Turbine	1					3	13	25.1461.51R	Sst housing -UR60	1					1

(1) 25.1460.20 (2) 25.1460.30 (3) 25.1460.35 (4) 25.1460.40 (5) 25.1460.50 (6) 25.1460.60 (7) 25.1460.70 (8) 25.1460.80